

The district, school and site information and personal data is for INTERNAL USE ONLY and must be kept confidential. External use must be limited to sharing district data with that respective district only.



## How to use this report

This report provides enrollment, action plan and assessment data for schools in the selected district, for the selected program and assessment. The data can be used to understand trends in work completed, identify current areas of focus, and suggests areas of opportunity for future policy and practice change efforts.

Data as of  
**Oct 27, 2020**

## District

This report is prepared exclusively for the following district:

▼ Leslie Co School District ▼

### Action Plans

The Action Plan is a tool to help schools manage tasks related to school health initiatives. Each school has one Action Plan, which can include items from both the Healthy Schools Program and RISE.

<p>Total items in schools' Action Plans</p> <p><b>0</b> items</p>	<p>Most commonly selected items on enrolled schools' Action Plans</p> <p>Your query returned no results</p>
<p>Total items marked complete</p> <p><b>0</b> items</p>	

## Program

▼ Healthy Schools Program ▼

The following charts show data specific to the childhood health program you have selected.

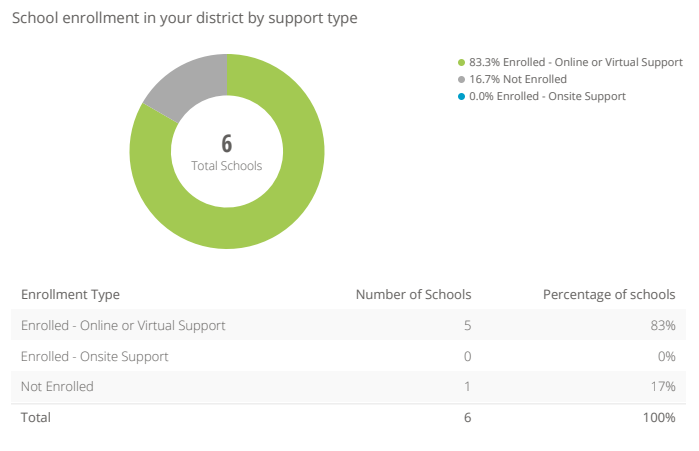
This pie chart and table show the counts and percentages of schools in your district that are enrolled in this program. The support types are defined as:

### Onsite Support

A Healthier Generation Program Manager for the program selected above meets with school staff in-person, conducting workshops and supporting the school's involvement in Healthier Generation programs.

### Online or Virtual Support

Healthier Generation supports the school's involvement in programs virtually, using either a Virtual Program Manager or the Member Engagement and Support Team as well as webinars, email, phone, on-demand learning and other digital tools.

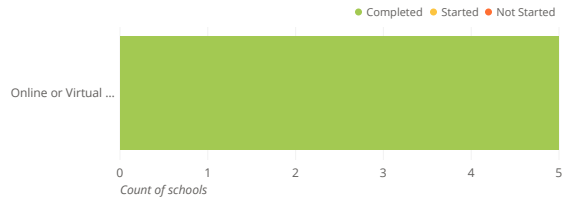


## Assessment

Healthy Schools Assessment

The following charts show data specific to the childhood health program assessment you have selected.

Assessment completion by support type



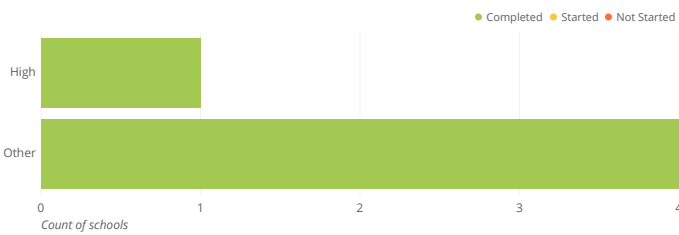
Assessment completion by support type

Type	Completed	% Complete	Started	% Started	Not Started	% Not Started	Total
All enrolled schools	5	100%	0	0%	0	0%	5
Online or Virtual Support	5	100%	0	0%	0	0%	5

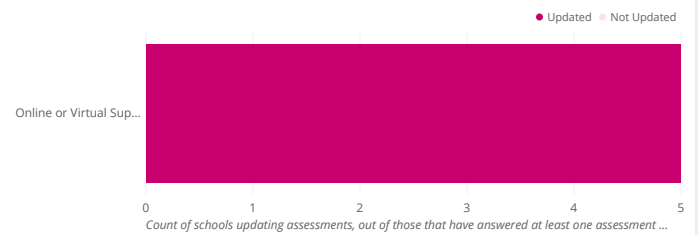
*View all 2 rows and 8 columns*

The Assessment completion by support type charts show how many schools in your district have completed (answered all questions at least once), started (answered at least one question, but not all of them) and not started this assessment.

Assessment completion among all enrolled schools, by grade level



Assessments updated by enrolled schools within the last 12 months, by support type



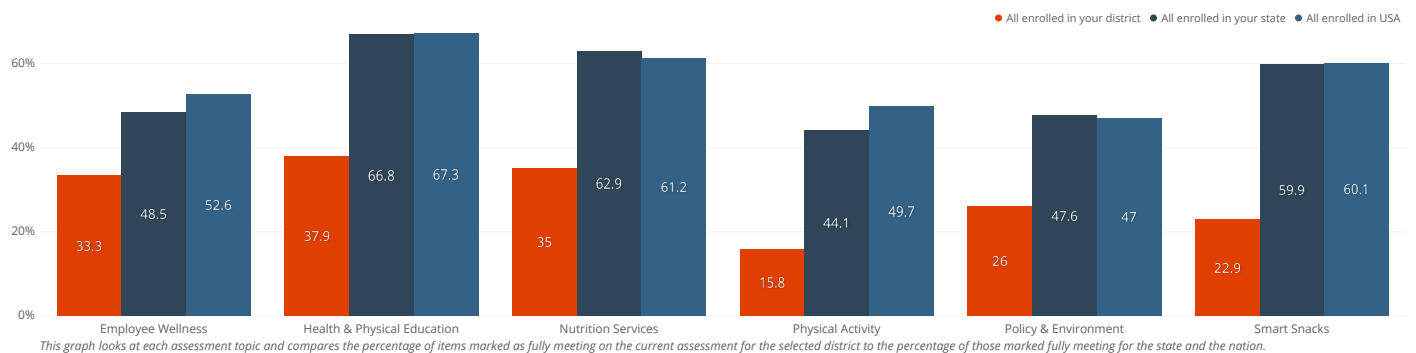
Type	Completed	% Complete	Started	% Started	Not Started	% Not Started	Total
All enrolled schools	5	100%	0	0%	0	0%	5
High	1	100%	0	0%	0	0%	1
Other	4	100%	0	0%	0	0%	4

*View all 3 rows and 8 columns*

Type	Updated	% Updated	Not Updated	% Not Updated
All enrolled schools	5	100%	0	0%
Online or Virtual Support	5	100%	0	0%

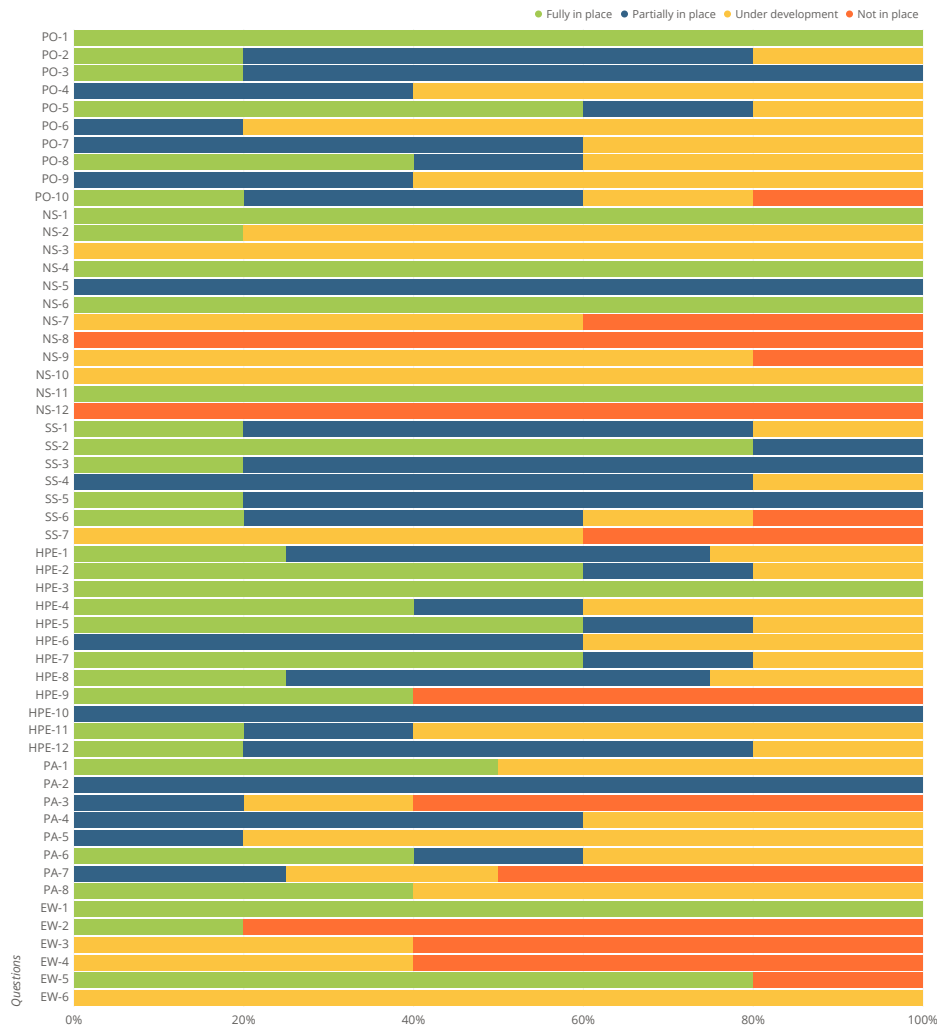
\*Note: Other schools include K-8, K-12, and other schools not considered Elementary, Middle, or High

Percentage of items fully meeting best practices on the current assessment compared to state & national data

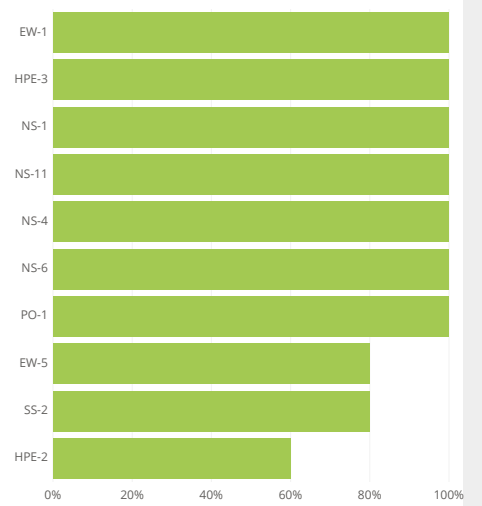


Note: The state and national benchmarks above include data from your district.

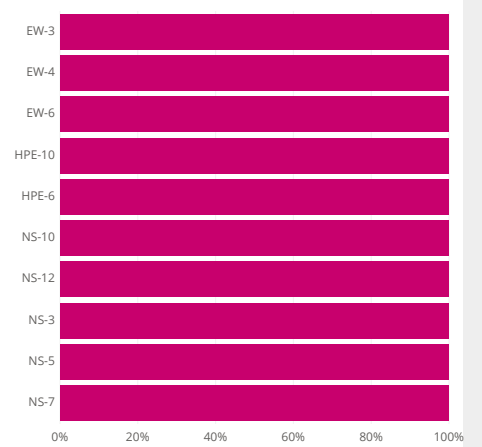
Assessment responses for schools in your district, listed by topic



Assessment responses with the highest percentage fully meeting



Assessment responses with the highest percentage not fully meeting

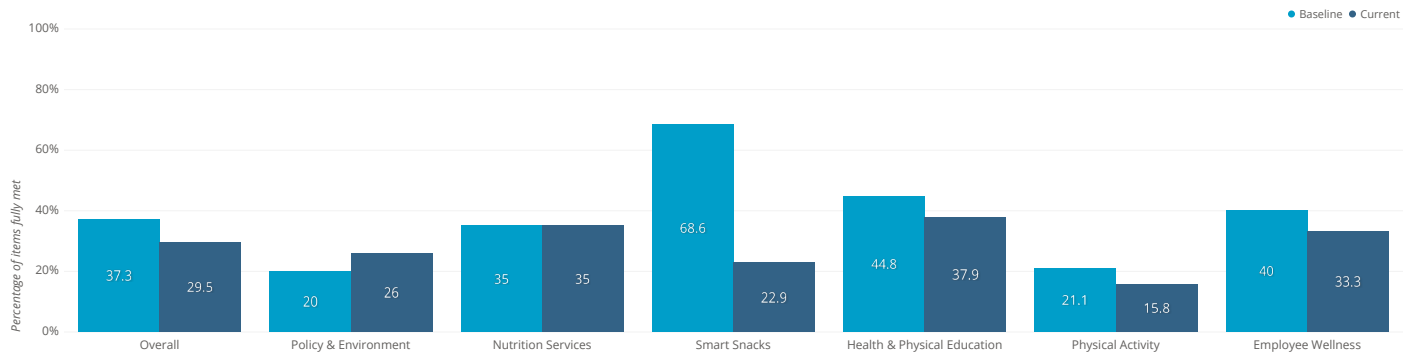


Assessment responses for schools in your district, listed by question

Criteria	Fully in place:#	Not in place:#	Partially in place:#	Under development:#	Fully in place:%	Not in place:%	Partially in place:%	Under development:%	Question Description
PO-1	5				100				Representative school health committee or team
PO-2	1		3	1	20		60	20	Written school health and safety policies
PO-3	1		4		20		80		Local school wellness policy
PO-4			2	3			40	60	School start times
PO-5	3		1	1	60		20	20	Health services provided by a full-time school nurse
PO-6			1	4			20	80	Counseling, psychological, and social services provided by a full-time counselor, social worker, and psychologist
PO-7			3	2			60	40	Parenting strategies
PO-8	2		1	2	40		20	40	Family engagement in school decision making
PO-9			2	3			40	60	Community involvement in school health initiatives
PO-10	1	1	2	1	20	20	40	20	Out-of-school programs
NS-1	5				100				Breakfast and lunch programs
NS-2	1			4	20			80	School breakfast
NS-3				5				100	School lunch
NS-4	5				100				Variety of offerings in school meals
NS-5			5				100		Promote healthy food and beverage choices and school meals using marketing and merchandising techniques.
NS-6	5				100				Annual continuing education and training requirements for school nutrition services staff
NS-7		2		3		40		60	Venues outside the cafeteria offer fruits and vegetables
NS-8		5				100			Collaboration between school nutrition services staff members and teachers
NS-9		1		4		20		80	Student and family involvement in the school meal programs and other foods and beverages sold, served and offered on school campus.
NS-10				5				100	Prohibit using food as reward or punishment
NS-11	5				100				Adequate time to eat school meals
NS-12		5				100			Farm to School activities
SS-1	1		3	1	20		60	20	All foods sold during the school day meet the USDA's Smart Snacks in School nutrition standards
SS-2	4		1		80		20		All beverages sold during the school day meet the USDA's Smart Snacks in School nutrition standards
SS-3	1		4		20		80		Food and beverage marketing
SS-4			4	1			80	20	All foods and beverages served and offered during the school day meet the USDA's Smart Snacks in School nutrition standards
SS-5	1		4		20		80		All foods and beverages sold during the extended school day meet the USDA's Smart Snacks in School nutrition standards
SS-6	1	1	2	1	20	20	40	20	All foods and beverages served and offered during the extended school day meet the USDA's Smart Snacks in School nutrition standards
SS-7		2		3		40		60	Fundraising efforts during and outside school hours meet the USDA's Smart Snacks in School nutrition standards
HPE-1	1		2	1	25		50	25	Minutes of physical education per week
HPE-2	3		1	1	60		20	20	Years of physical education
HPE-3	5				100				Sequential physical education curriculum consistent with standards
HPE-4	2		1	2	40		20	40	Students active at least 50% of class time
HPE-5	3		1	1	60		20	20	Professional development for physical education teachers
HPE-6			3	2			60	40	Information and materials for physical education teachers
HPE-7	3		1	1	60		20	20	Licensed physical education teachers
HPE-8	1		2	1	25		50	25	Health education taught in all grades
HPE-9	2	3			40	60			Required health education course
HPE-10			5				100		Essential topics on physical activity
HPE-11	1		1	3	20		20	60	Essential topics on healthy eating
HPE-12	1		3	1	20		60	20	Opportunities to practice skills
PA-1	2			2	50			50	Recess
PA-2			5				100		Availability of physical activity breaks in classrooms
PA-3		3	1	1		60	20	20	Promotion or support of walking and bicycling to and/or from school

[View all 55 rows and 10 columns](#)

Percentage of items fully met on the baseline assessment compared to the current assessment



This graph compares the total number of assessment items fully implemented on the earliest Healthier Generation Healthy Schools Program Assessment, for each topic of the assessment, to the total number of assessment items that could be fully implemented for all schools. The graph also includes this information for the most recent update of the assessment.

Current assessment responses by schools in your district

School Name	City	State	Postal Code	Low Grade	High Grade	Assessment Start Date	Assessment Baseline Date	Assessment Update Date	Action Plan Start Date	Action Plan Upd...
Hayes Lewis Elementary School	Yeaddiss	KY	41777-0070	K	8	Sep 3, 2019	Oct 6, 2020	Oct 6, 2020		
Leslie Co High School	Hyden	KY	41749-0970	9	12	Sep 3, 2019	Oct 6, 2020	Oct 6, 2020		
Mountain View Elementary Sch	Hyden	KY	41749-0926	K	8	Jan 15, 2019	Oct 19, 2020	Oct 19, 2020		
Stinnett Elementary School	Hoskinston	KY	40844	K	8	Sep 3, 2019	Oct 6, 2020	Oct 6, 2020		
W B Muncy Elementary School	Wooton	KY	41776-0140	K	8	Sep 3, 2019	Oct 6, 2020	Oct 6, 2020		

*View all 5 rows and 129 columns*

Assessment responses on a scale of 0-3, where 0 = "Not in place", 1 = "Under development", 2 = "Partially in place", 3 = "Fully in place"

See .CSV file for full results